



SN4242108

Industry Standards

UL 508, Types 4, 12, & 13
CSA Certified, Types 4 & 12
NEMA/EEMAC Types 3, 4, 12, & 13
JIC EL-1-71



UL File E64791



CSA File LL66078

FEATURES-SPECIFICATIONS
Applications

Designed to house the following:

- **Allen-Bradley** Bulletin 1494V disconnect switches with flange-mounted variable depth operating mechanisms and Bulletin 1494V flange-mounted variable depth operating mechanisms for circuit breakers.

Allen-Bradley Bulletin 1494V-R1, -R2, and -W2 operating handles and Allen-Bradley Bulletin 1494F disconnect devices or Bulletin 1494D circuit breaker operators will not fit these enclosures.

- **ABB Controls** flange-mounted variable depth operating mechanisms for disconnect switches and circuit breakers
- **Cutler-Hammer/Westinghouse** Type C361 flange-mounted variable depth operating mechanisms with disconnect switches and Type C371 flange-mounted variable depth operating mechanisms for circuit breakers
- **General Electric** Type STDA flange handles and variable depth operating mechanisms for disconnect switches and circuit breakers. Also Spectra Flex™ cable operators for circuit breakers
- **I-T-E Max-Flex™** flange-mounted variable depth operating handles for circuit breakers.
- **Square D** Class 9422 disconnect switches with flange-mounted variable depth operating mechanisms or

cable mechanism and Class 9422 flange-mounted variable depth operating mechanisms or cable mechanism for circuit breakers.

Bulletin A19 enclosures will not accept Square D Class 9422 bracket-mounted disconnect devices, 9422TGI, or TG2 devices

Construction

- Bodies and doors fabricated from 14 gauge steel
- Plasma welded seams
- Rolled lip around all sides of enclosure opening excludes liquids and contaminants
- All exterior hardware is stainless steel
- Stainless steel door clamps are provided around three sides of doors for a watertight seal, additional door hardware is not required
- Body and door stiffeners provided in larger enclosures for extra rigidity
- Doors easily removed by pulling continuous hinge pin
- Polyurethane poured-in-place gasket
- External mounting feet.
- Collar studs for mounting **optional** back panel
- Grounding provisions provided
- Bracket welded to door for attaching disconnect interlock door catch
- Holes provided in body for mounting disconnect operating handle and operating mechanism. These

enclosures are designed to operate properly without the use of door hardware

- Print pocket is provided

Finish

- ANSI 61 gray polyester powder inside and out over phosphatized surfaces
- **Optional** back panels are white polyester powder over phosphatized surfaces

Accessories

- Back panels (reference tables)
- See pages J1-J19
- Blank Adapter Plates on pages F57 and J12

IMPORTANT

- Disconnect switch or circuit breakers, operating handle, and operating mechanism are not furnished with the enclosure and must be ordered separately from the disconnect manufacturer
- Operator adapter plates are not required with this enclosure
- Disconnect ordering information is located on page F8
- Review space occupied by disconnect drawing on page F7 and disconnect tables on pages F9-F15 to determine if the disconnect device you are using will fit the enclosure size you have selected



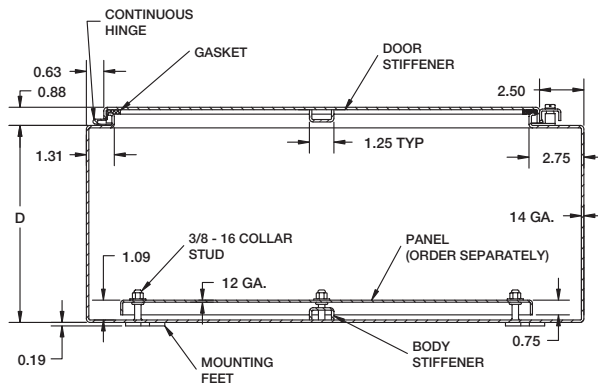
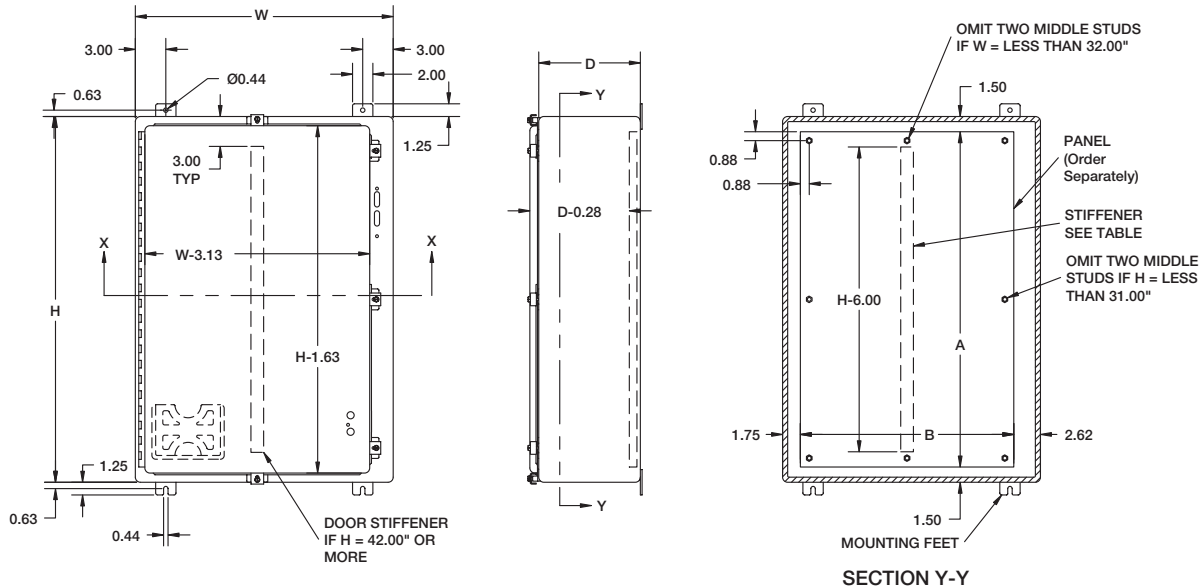
SN4 SERIES ENCLOSURES NEMA 4 FLANGED SINGLE DOOR DISCONNECT

F7

SN4 SERIES WALL-MOUNT DISCONNECTS						
CATALOG NUMBER	BODY/DOOR STEEL GAUGE	ENCLOSURE SIZE H X W X D	BACK PANEL CATALOG NUMBER*	BACK PANEL SIZE A X B	STIFFENER	
					DOOR	BODY
SN4242108	14/14	24.00x21.38x8.13 (610x543x207)	NP2420	21.00x17.00 (533x432)	No	No
SN4242508	14/14	24.00x25.38x8.13 (610x645x207)	NP2424	21.00x21.00 (533x533)	No	No
SN4302508	14/14	30.00x25.38x8.13 (762x645x207)	NP3024	27.00x21.00 (686x533)	No	No
SN4363108	14/14	36.00x31.38x8.13 (914x797x207)	NP3630	33.00x27.00 (838x686)	No	Yes
SN4423112	14/14	42.00x31.38x12.13 (1067x797x308)	NP4230	39.00x27.00 (991x686)	Yes	Yes
SN4423712	14/14	42.00x37.38x12.13 (1067x949x308)	NP4236	39.00x33.00 (991x838)	Yes	Yes
SN4483712**	14/14	48.00x37.38x12.13 (1219x949x308)	NP4836	45.00x33.00 (1143x838)	Yes	Yes
SN4603712**	14/14	60.00x37.38x12.13 (1524x949x308)	NP6036	57.00x33.00 (1448x838)	Yes	Yes

*Back panels must be ordered separately.

**Enclosures are supplied with closed cell neoprene gasket (not foam-in-place).



SECTION X-X

Notes:

1. Large print pocket (8" x 10") is provided in each enclosure.
2. Panels are made from 12 Ga. steel.
3. Panels have flanges along all sides when either dimension exceeds 17".
4. The number of door clamps is dependent on size of enclosure. Clamps are furnished along three sides of door.

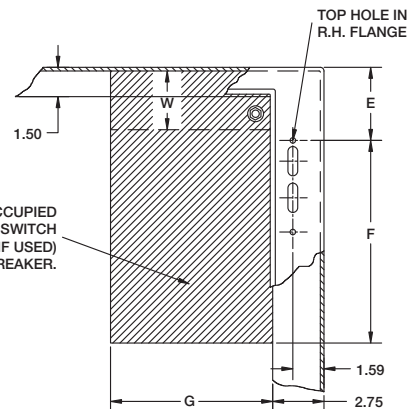
Space Occupied by Disconnect

E = 8.63 when D = 8.00
E = 11.62 when D = 12.00
WB = Wiring Space

See pages F9-F15 for various brands of disconnects for "F", "G", & "WB" dimensions.

Disconnects will occupy space on panel shown by dimensions "E", "F", & "G". Wiring space "WB" is available when disconnect is installed in the enclosure.

Refer to National Electrical Code 1996 article 430-10(b) for wiring space required for line side conductors to be connected to disconnect. Verify your application to determine if wiring space is adequate.



WIEGMANN®

DISCONNECT ORDERING INFORMATION

When ordering wall-mounted disconnects from the various manufacturers, be sure to order all of the necessary items. Each company has a different system, so care is required. Order the following items from the disconnect manufacturer.

Use a Type 4 disconnect operating handle on the enclosure flange to provide corrosion resistance and maintain enclosure rating.

Allen-Bradley

When using a Bulletin 1494V disconnect switch, order:

1. A disconnect switch with operating mechanism (Bulletin 1494V)
2. An operating handle (Bulletin 1494V-W1)
3. A connecting rod [Bulletin 1494V-RA1 for 8.00" (203mm) deep enclosures; Bulletin 1494V-RA2 for 12.00" (305mm) deep enclosures]
4. A trailer fuse block kit, if required (Bulletin 1494V)
5. A fuse clip kit, if required
6. Line and load connectors, if required

When using a Bulletin 1494V circuit breaker operating mechanism, order:

1. A circuit breaker (C-H/Westinghouse)
2. A circuit breaker operating mechanism (Bulletin 1494V)
3. An operating handle (Bulletin 494V-W11)
4. A connecting rod [Bulletin 1494V-RA1 for 8.00" (203mm) deep enclosures; Bulletin 1494V-RA2 for 12.00" (305mm) deep enclosures]

ABB Controls

When using a disconnect switch, order:

1. A flange operated switch (fusible or non-fusible)
2. A shaft [DSFHS-12]
3. A handle (DSFHN-HS4)

When using a circuit breaker, order:

1. A circuit breaker (ABB)
2. An operating mechanism
3. A shaft [FHS-12]
4. A handle (FHN-HS4)

PLEASE NOTE:

1. Operator adapter plates and door hardware are not required with enclosures on page F7.
2. Various other switch accessories and circuit breaker accessories are available from disconnect manufacturers. The above information is subject to change without notice. Please contact Hubbell-Wiegmann or the disconnect manufacturer if there are further questions.
3. The "Space Occupied" tables (pages F9-F15) are based upon information supplied by disconnect manufacturers. Hubbell-Wiegmann does not assume responsibility for the accuracy of these dimensions.

Cutler-Hammer/Westinghouse

When using a Type C361 disconnect switch, order:

1. A disconnect switch with an operating mechanism
2. An operating handle (C361H2 or C361H4)

When using a Type C371 circuit breaker operating mechanism with a C-H/Westinghouse circuit breaker, order:

1. A circuit breaker
2. An operating mechanism
3. An operating handle (C371H2 or C371H4)

When using a C-H/Westinghouse circuit breaker with a Type 4/4X Flex Shaft™ handle mechanism, order:

1. A circuit breaker
2. A complete Flex Shaft™ handle mechanism

General Electric

When using a disconnect switch, order:

1. A disconnect switch (Type QMR or QMW)
2. A fuse clip kit or no-fuse kit
3. A flange handle (STDA1X)
4. A variable depth operating mechanism

When using a circuit breaker, order:

1. A circuit breaker
2. A flange handle (STDA1X)
3. A variable depth operating mechanism

When using a circuit breaker with a Spectra Flex™ cable operator, order:

1. A circuit breaker
2. A flange-mounted handle mechanism
3. A breaker-mounted mechanism
4. An operating cable

I-T-E Siemens

When using a disconnect switch, order:

1. A basic switch (right-hand)
2. A fuse or no-fuse kit
3. A flange-mounted handle (FHOHS4)
4. Switch operator
5. Cable, 36.00"

When using a circuit breaker, order:

1. A circuit breaker
2. Pressure wire connectors
3. A flange-mounted handle (FH0H4)
4. A circuit breaker operator mechanism
5. An operating cable (standard 36.00")

Square D

When using a Class 9422 disconnect switch, order:

1. A disconnect switch with operating mechanism (Class 9422)
2. A handle mechanism (Class 9422 Type A-2 or A-1)

When using a circuit breaker, order:

1. A circuit breaker (Square D)
2. An operating mechanism (Class 9422)
3. A handle mechanism (Class 9422 Type A-2 or A-1)

When using a Class 9422 Type "T" disconnect switch with a cable mechanism, order:

1. A disconnect switch with operating mechanism (Class 9422, Type T)
2. A handle mechanism (Class 9422 Type A-1)

3. A cable mechanism (Class 9422 CFT_O) 3-, 5-, or 10-foot

When using a circuit breaker with a cable mechanism, order:

1. A circuit breaker (Square D)
2. A handle mechanism (Class 9422 Type A-1)
3. A cable mechanism (Class 9422 CFT_O) 3-, 5-, or 10-foot

* Items available from disconnect manufacturer as complete kits.



**SDN12 SERIES & SN4 SERIES ENCLOSURES
DISCONNECT SPACE OCCUPIED & AVAILABLE WIRING SPACE INFORMATION**

ALLEN-BRADLEY BULLETIN 1494V DISCONNECTS										
						WIRE BEND SPACE "WB" ABOVE DISCONNECT				
						SDN12 WALL-MOUNTS (PAGE F2-F5)			SN4 WALL-MOUNTS (PAGE F6-F8)	
TYPE NUMBER	AMP RATING	FUSE CLIP	FUSE CLASS	SPACE OCCUPIED		WHEN D=8.00 WB	WHEN D=10.00 WB	WHEN D=12 OR 16 WB	WHEN D=8.00 WB	WHEN D=12.00 WB
				F	G*					
DS30	30A	No fuse	—	3.88	6.62	2.88	5.25	9.75	6.75	9.75
DS30	30A	30A-250V	H, K, R	5.25	6.62	2.88	5.25	9.75	6.75	9.75
DS30	30A	30A-600V	H, K, R	8.00	6.62	2.88	5.25	9.75	6.75	9.75
DS30	30A	30A-600V	J	5.25	6.62	2.88	5.25	9.75	6.75	9.75
DS30	30A	60A-250V	H, K	6.00	6.62	2.88	5.25	9.75	6.75	9.75
DS30	30A	60A-600V	H, K	8.50	6.62	2.88	5.25	9.75	6.75	9.75
DS30	30A	60A-600V	J	5.38	6.62	2.88	5.25	9.75	6.75	9.75
DS60	60A	No fuse	—	3.88	6.62	2.75	5.12	9.62	6.62	9.62
DS60	60A	60A-250V	H, K, R	6.00	6.62	2.75	5.12	9.62	6.62	9.62
DS60	60A	60A-600V	H, K, R	8.50	6.62	2.75	5.12	9.62	6.62	9.62
DS60	60A	60A-600V	J	5.38	6.62	2.75	5.12	9.62	6.62	9.62
DS60	60A	30A-600V	H, K, R	8.00	6.62	2.75	5.12	9.62	6.62	9.62
DS60	60A	100A-250V	H, K	8.50	6.62	2.75	5.12	9.62	6.62	9.62
DS60	60A	100A-600V	H, K	10.50	6.62	2.75	5.12	9.62	6.62	9.62
DS60	60A	100A-600V	J	7.25	6.62	2.75	5.12	9.62	6.62	9.62
DS100	100A***	No fuse	—	3.88	6.62	—	5.12	9.62	6.44	9.62
DS100	100A***	100A-250V	H, K, R	8.12	6.62	—	5.12	9.62	6.44	9.62
DS100	100A***	100A-600V	H, K, R	10.12	6.62	—	5.12	9.62	6.44	9.62
DS100	100A***	100A-600V	J	6.88	6.62	—	5.12	9.62	6.44	9.62
DS100	100A***	60A-600V	H, K, R	10.12	6.62	—	5.12	9.62	6.44	9.62
DS100	100A***	60A-600V	J	8.88	6.62	—	5.12	9.62	6.44	9.62
DS200	200A***	No fuse	—	4.75	7.88	—	—	8.12	—	8.12
DS200	200A***	200A-250V	H, K, R	10.88	7.88	—	—	8.12	—	8.12
DS200	200A***	200A-600V	H, K, R	13.38	7.88	—	—	8.12	—	8.12
DS200	200A***	200A-600V	J	9.50	7.88	—	—	8.12	—	8.12
DS200	200A***	100A-600V	H, K, R	12.00	7.88	—	—	8.12	—	8.12
DS200	200A***	100A-600V	J	8.75	7.88	—	—	8.12	—	8.12
DS400	400A**	No fuse	—	10.75	10.88	—	—	—	—	—
DS400	400A**	400A-250V	H, K, R	16.12	10.88	—	—	—	—	—
DS400	400A**	400A-600V	H, K, R	19.12	10.88	—	—	—	—	—
DS400	400A**	400A-600V	J	14.62	10.88	—	—	—	—	—
DS600	600A	No fuse	—	10.75	10.88	—	—	—	—	—
DS600	600A****	600A-250V	H, R	10.75	10.88	—	—	—	—	—
DS600	600A****	600A-600V	H, R	10.75	10.88	—	—	—	—	—
DS600	600A	600A-600V	J	17.59	10.88	—	—	—	—	—
M40	15A-150A	Westinghouse Circuit Breakers EHD, FD, FDB, FDC, HFD, HMCP	—	5.00	4.50	4.25	6.62	11.12	8.12	11.12
M50	70A-250A	Westinghouse Circuit Breakers JD, JDB, JDC, HJD, HMCP	—	9.75	4.75	—	—	10.62	—	10.62
M60	100A-400A	Westinghouse Circuit Breakers KD, KDB, KDC, HKD, HMCP	—	9.69	6.12	—	—	10.50	—	10.50

* Does not include space for optional auxiliary switch.

** The 400 amp disconnect switch and the 600 amp disconnect switch will only fit catalog number SDN12603812A (see page F2).

Wire bend space of 12.13" is provided above disconnect when installed.

*** Series B

**** "F" and "G" do not include separately mounted fuse blocks.

SDN12 SERIES & SN4 SERIES ENCLOSURES DISCONNECT SPACE OCCUPIED & AVAILABLE WIRING SPACE INFORMATION

ABB CONTROLS DISCONNECT SWITCHES WITH FLANGE-MOUNTED OPERATORS										
						WIRE BEND SPACE "WB" ABOVE DISCONNECT				
						SDN12 WALL-MOUNTS (PAGE F2-F5)			SN4 WALL-MOUNTS (PAGE F6-F8)	
SWITCH NUMBER	AMP RATING	FUSE CLIP	FUSE CLASS	SPACE OCCUPIED		WHEN D=8.00 WB	WHEN D=10.00 WB	WHEN D=12 OR 16 WB	WHEN D=8.00 WB	WHEN D=12.00 WB
				F	G					
OETL-NF30-F	40A	No fuse	—	4.45	3.78	6.41	8.75	13.28	10.28	13.28
OETL-NF60-F	80A	No fuse	—	4.86	3.78	6.22	8.56	13.09	10.09	13.09
OETL-NF100-F	100A	No fuse	—	4.86	4.78	5.66	8.00	12.53	9.53	12.53
OETL-NF175-F	175A	No fuse	—	7.30	6.49	—	5.75	10.28	7.28	10.28
OETL-NF200-F	200A	No fuse	—	7.36	7.28	—	5.75	10.28	7.28	10.28
OESA-F30J6-F	30A	30A-600V	J	4.28	6.58	4.73	7.07	11.61	8.61	11.61
OESA-F60J6-F	60A	60A-600V	J	4.28	6.26	4.73	7.07	11.61	8.61	11.61
OESA-F100J6-F	100A	100A-600V	J	6.54	7.65	4.30	6.64	11.17	8.17	11.17

ABB CONTROLS CIRCUIT BREAKERS WITH FLANGE-MOUNTED OPERATORS										
						WIRE BEND SPACE "WB" ABOVE DISCONNECT				
						SDN12 WALL-MOUNTS (PAGE F2-F5)			SN4 WALL-MOUNTS (PAGE F6-F8)	
MECHANISM	AMP RATING	FRAME TYPE	SPACE OCCUPIED		WHEN D=8.00 WB	WHEN D=10.00 WB	WHEN D=12 OR 16 WB	WHEN D=8.00 WB	WHEN D=12.00 WB	
			F	G						
FHD-M	150A	D	6.92	3.94	5.29	7.64	12.17	9.17	12.17	
FHF-M	150A-225A	E/Q	5.98	4.23	3.84	6.19	10.72	7.72	10.72	
FHF-M	225A	F	7.44	4.23	3.84	6.19	10.72	7.72	10.72	
FHJ-M	400A	J	9.71	5.62	—	—	8.77	—	8.77	
FHM-M	600A	L	8.28	11.26	—	—	8.28	—	8.28	
FHM-M	800A	M	10.11	11.26	—	—	7.87	—	7.87	

CUTLER-HAMMER C361 CIRCUIT DISCONNECT SWITCHES											
						WIRE BEND SPACE "WB" ABOVE DISCONNECT					
						SDN12 WALL-MOUNTS (PAGE F2-F5)			SN4 WALL-MOUNTS (PAGE F6-F8)		
SWITCH NUMBER	TYPE NUMBER	AMP RATING	FUSE CLIP	FUSE CLASS	SPACE OCCUPIED		WHEN D=8.00 WB	WHEN D=10.00 WB	WHEN D=12 OR 16 WB	WHEN D=8.00 WB	WHEN D=12.00 WB
					F	G					
C361	NC	30A	No fuse	—	5.75	7.43	3.44	5.75	10.31	7.31	10.31
C361	SC21	30A	30A-250V	H, K, R	8.38	7.43	3.44	5.75	10.31	7.31	10.31
C361	SC61	30A	60A-250V	H, K, R	8.38	7.43	3.44	5.75	10.31	7.31	10.31
C361	SC61	30A	30A-600V	H, J, K, R	8.38	7.43	3.44	5.75	10.31	7.31	10.31
C361	ND	60A	No fuse	—	5.75	7.43	3.44	5.75	10.31	7.31	10.31
C361	SD22	60A	60A-250V	H, K, R	8.38	7.43	3.44	5.75	10.31	7.31	10.31
C361	SD22	60A	30A-600V	J	8.38	7.43	3.44	5.75	10.31	7.31	10.31
C361	SD62	60A	60A-600V	H, K, R	8.38	7.43	3.44	5.75	10.31	7.31	10.31
C361	SD62	60A	60A-600V	J	8.38	7.43	3.44	5.75	10.31	7.31	10.31
C361	NE	100A	No fuse	—	5.56	8.95	3.00	5.38	9.91	7.47	9.91
C361	SE263	100A	100A-250V	H, K, R	10.31	8.95	3.00	5.38	9.91	7.47	9.91
C361	SE263	100A	100A-600V	H, K, R	10.31	8.95	3.00	5.38	9.91	7.47	9.91
C361	SE263	100A	100A-600V	J	10.31	8.95	3.00	5.38	9.91	7.47	9.91
C361	NF*	200A	No fuse	—	13.06	10.00	—	—	7.94	4.94	7.94
C361	SF264*	200A	200A-250V	H, K, R	13.06	10.00	—	—	7.94	4.94	7.94
C361	SF264*	200A	200A-600V	H, J, K, R	13.06	10.00	—	—	7.94	4.94	7.94

*200 amp switch should be installed in an enclosure with an "H" dimension of 30.00" (762mm) or more.

**SDN12 SERIES & SN4 SERIES ENCLOSURES
DISCONNECT SPACE OCCUPIED & AVAILABLE WIRING SPACE INFORMATION**

CUTLER-HAMMER C371 CIRCUIT BREAKER OPERATORS FOR C-H/WESTINGHOUSE CIRCUIT BREAKERS									
					WIRE BEND SPACE "WB" ABOVE DISCONNECT				
					SDN12 WALL-MOUNTS (PAGE F2-F5)			SN4 WALL-MOUNTS (PAGE F6-F8)	
TYPE NUMBER	MAX AMP RATING	FRAME TYPE	SPACE OCCUPIED		WHEN D=8.00 WB	WHEN D=10.00 WB	WHEN D=12 OR 16 WB	WHEN D=8.00 WB	WHEN D=12.00 WB
			F	G					
C371E	225A	F Frame: EHD, FDB, FD, HFD, FDC	6.00	5.50	4.44	6.81	11.44	8.44	11.44
C371E	150A	F Frame: HMCP	6.00	5.50	4.44	6.81	11.44	8.44	11.44
C371F	250A	J Frame: JDB, JD, HJD, JDC	8.94	8.00	—	6.75	11.25	—	11.25
C371F	250A	J Frame: HMCP	10.94	8.00	—	6.75	11.25	—	11.25
C371F	400A	K Frame: DK, KDB, KD, HKD	9.75	8.00	—	—	10.75	—	10.75
C371F	400A	K Frame: HMCP	9.75	8.00	—	—	10.75	—	10.75
C371G	600A	L Frame: LD, HLD, LDC	8.44	11.88	—	—	9.18	—	9.18
C371G	600A	L Frame: HMCP	8.44	11.88	—	—	9.18	—	9.18

CUTLER-HAMMER FLEX SHAFT™ OPERATOR MECHANISMS FOR C-H/WESTINGHOUSE CIRCUIT BREAKERS				
COMPLETE OPERATOR MECHANISM	AMP RATING	FRAME TYPE	BREAKER HEIGHT	BREAKER WIDTH
F1S03	225A	F Frame: EHD, FDB, FD, HFD, FDC	6.00	4.12
F1S03	150A	F Frame: HMCP	6.00	4.12
F2S03	250A	J Frame: JDB, JD, HJD, JDC	10.00	4.12
F2S03	250A	J Frame: HMCP	10.00	4.12
F3S03	400A	K Frame: DK, KDB, KD, HKD	10.12	5.50
F3S03	400A	K Frame: HMCP	12.45	5.50
F4S04	600A	L Frame: LD, HLD, LDC	10.75	8.25
F4S04	600A	L Frame: HMCP	12.50	8.25
F7S04	800A	M Frame: MD, MDS	16.00	8.25
F5S04	1200A	N Frame: ND, HND, NDC	16.00	8.25
F6S04	2500A	R Frame: RD, CRD, RDC	16.00	15.50

Catalog numbers for complete mechanisms include a flange-mounted handle, flexible shaft and circuit breaker mechanism. The last digit of the catalog number denotes the length of shaft (F1S03 = 3-foot shaft). The F, J, K frame Flex Shafts™ are available in 3-foot to 10-foot lengths. The L, N, R frame Flex Shafts are available in 4-foot to 6-foot lengths.

Space Occupied by Disconnect

- The Flex Shaft™ system allows the circuit breaker to be positioned independent from the flange-mounted handle mechanism.
- Refer to **National Electrical Code® 1996** article 430-10(b) for wiring space "WB" required for line side conductors.
- Choose the length of shaft based on placement of the circuit breaker in the enclosure ensuring a 4-inch min. bending radius for the Flex Shaft™.
- Space occupied by circuit breaker is determined by overall height "X", width "Y", wire bend space "WB" and location "G" as selected from right to left.

SDN12 SERIES & SN4 SERIES ENCLOSURES DISCONNECT SPACE OCCUPIED & AVAILABLE WIRING SPACE INFORMATION

GENERAL ELECTRIC TYPE STDA OPERATORS FOR DISCONNECTS										
						WIRE BEND SPACE "WB" ABOVE DISCONNECT				
						SDN12 WALL-MOUNTS (PAGE F2-F5)			SN4 WALL-MOUNTS (PAGE F6-F8)	
MECHANISM	AMP RATING	FUSE CLIP	FUSE CLASS	SPACE OCCUPIED		WHEN D=8.00 WB	WHEN D=10.00 WB	WHEN D=12 OR 16 WB	WHEN D=8.00 WB	WHEN D=12.00 WB
				F	G					
TDOM1A	30A	No fuse	—	7.75**	5.25	6.18*	7.62	12.12	9.12	12.12
TDOM1A	30A	30A-250V	H, R	7.75**	5.25	6.18*	7.62	12.12	9.12	12.12
TDOM1B	30A	30A-600V	H, R	12.38**	5.25	6.18*	7.62	12.12	9.12	12.12
TDOM1B	30A	60A-250V	H, R	12.38**	5.25	6.18*	7.62	12.12	9.12	12.12
TDOM1B	30A	60A-600V	H, R	12.38**	5.25	6.18*	7.62	12.12	9.12	12.12
TDOM1A	60A	No fuse	—	7.75**	5.25	6.18*	7.62	12.12	9.12	12.12
TDOM1B	60A	60A-250V	H, R	12.38**	5.25	6.18*	7.62	12.12	9.12	12.12
TDOM1B	60A	60A-600V	H, R	12.38**	5.25	6.18*	7.62	12.12	9.12	12.12
TDOM1B	60A	100A-250V	H, R	12.38**	5.25	6.18*	7.62	12.12	9.12	12.12
TDOM1B	60A	100A-600V	H, R	12.38**	5.25	6.18*	7.62	12.12	9.12	12.12
TDOM1A	100A	No fuse	—	7.75**	5.25	6.18*	7.62	12.12	9.12	12.12
TDOM1B	100A	100A-250V	H, R	12.38**	5.25	6.18*	7.62	12.12	9.12	12.12
TDOM1B	100A	100A-600V	H, R	12.38**	5.25	6.18*	7.62	12.12	9.12	12.12
TDOM1B	100A	200A-250V	H, R	12.38**	5.25	6.18*	7.62	12.12	9.12	12.12
TDOM1B	100A	200A-600V	H, R	12.38**	5.25	6.18*	7.62	12.12	9.12	12.12
TDOM2	200A	No fuse	—	7.00	9.12	—	—	9.50	6.50	9.50
TDOM2	200A	200A-250V	H, R	15.38	9.12	—	—	9.50	6.50	9.50
TDOM2	200A	200A-600V	H, R	15.38	9.12	—	—	9.50	6.50	9.50

* Disconnect moved down .88" to fit on panel.

** Dimension applies to 8.00" (203mm) deep enclosures and is .88" less in deeper enclosures.

GENERAL ELECTRIC TYPE STDA OPERATORS FOR CIRCUIT BREAKERS										
OPERATORS FOR CIRCUIT BREAKERS						WIRE BEND SPACE "WB" ABOVE DISCONNECT				
						SDN12 WALL-MOUNTS (PAGE F2-F5)			SN4 WALL-MOUNTS (PAGE F6-F8)	
MECHANISM	AMP RATING	FRAME TYPE	SPACE OCCUPIED		WHEN D=8.00 WB	WHEN D=10.00 WB	WHEN D=12 OR 16 WB	WHEN D=8.00 WB	WHEN D=12.00 WB	
			F	G						
SDOM1A	150A	TEB, TED, THED	7.75**	5.25	6.06*	7.50	12.06	9.06	12.06	
SDOM1A	150A	TEC	7.75**	5.25	6.06*	7.50	12.06	9.06	12.06	
TDOM1B	150A	TB1	12.38**	5.25	6.06*	7.50	12.06	9.06	12.06	
TDOM1B	150A	TEC, TECL	12.38**	5.25	6.06*	7.50	12.06	9.06	12.06	
TDOM1C	150A	TEL	7.75**	5.25	6.06*	7.50	12.06	9.06	12.06	
TDOM1D	150A	THLC1	7.75**	5.25	—	5.12	9.62	6.62	9.62	
TDOM3	225A	TFJ	10.38	5.75	—	6.06	10.62	7.62	10.62	
TDOM3	225A	TFK, THFK, TFL	10.38	5.75	—	6.06	10.62	7.62	10.62	
TDOM4	400A	TJJ, TJK4, THJK4, TJL4V	8.25	9.38	—	5.12	9.69	6.69	9.69	
TDOM4	600A	TJK6, THJK6, TJ4V, TJL4V	8.25	9.38	—	5.12	9.69	6.69	9.69	
TDOM5	400A	TB4, TJH6S	14.25	9.38	—	5.12	9.69	6.69	9.69	
TDOM6	225A	TLB2, THLC2	11.75	9.38	—	—	9.12	6.12	9.12	
TDOM6	400A	TLB4, THLC4	11.75	9.38	—	—	7.75	4.75	7.75	
SDOM1A	150A	SPECTRA SE150	7.75**	5.25	6.06*	7.50	12.06	9.06	12.06	
SDOM3	250A	SPECTR SF250	10.38	5.75	—	6.06	10.62	7.06	10.06	
SDOM4	600A	SPECTRA SG600	10.00	7.00	—	—	7.93	—	7.93	

* Disconnect moved down .88" to fit on panel.

** Dimension applies to 8.00" (203mm) deep enclosures and is .88" less in deeper enclosures.



**SDN12 SERIES & SN4 SERIES ENCLOSURES
DISCONNECT SPACE OCCUPIED & AVAILABLE WIRING SPACE INFORMATION**

GENERAL ELECTRIC CIRCUIT BREAKERS WITH SPECTRA FLEX™ CABLE OPERATORS					
FRAME SIZE	MAXIMUM AMP RATING	CIRCUIT BREAKER HEIGHT X	CIRCUIT BREAKER WIDTH Y	SDN12 WALL-MOUNTS	SN4 WALL-MOUNTS
E150	150A	6.31	4.12	For enclosures that accept these devices, see page F2-F5.	For enclosures that accept these devices, see page F6-F8.
SE150	150A	6.31	4.12		
SF250	250A	10.12	4.12		
SG600	600A	10.09	5.50		
SK1200	1200A	15.50	8.25		

FRAME SIZE	BREAKER MECHANISM	FLANGE-MOUNTING HANDLE**	OPERATING CABLE*
E150	SCOM1A	SCH1	SC3L
SE150/SF250	SCOM1EF	SCH1	SC3L
SG600	SCOM1G	SCH1	SC3L
SK1200	SCOM1K	SCH2K	SC3H

* Operating cables are available in 3-foot to 10-foot lengths. (The number 3 in the catalog number denotes 3-foot cable.)

** Add "X" for NEMA 4 or 4X flange-mounted handle.

Space Occupied by Circuit Breaker

- The General Electric Spectra-Flex™ system allows the circuit breaker to be positioned independent from the flange-mounted handle mechanism.
- Refer to **National Electrical Code® 1996** article 430-10(b) for wiring space "WB" required for line side conductors.
- Choose the operating cable length based on placement of the circuit breaker in the enclosure ensuring a 3" minimum bending radius for the cable.
- Space occupied by circuit breaker is determined by overall circuit breaker size ("X" height and "Y" width) plus "WB" wire bend space and location "G" as selected from right to left.

I-T-E DISCONNECT SWITCHES FOR MAX-FLEX™ OPERATORS							
SWITCH	AMP RATING	FUSE CLIP	FUSE CLASS	DISCONNECT HEIGHT X	DISCONNECT WIDTH Y	SDN12 WALL-MOUNTS	SN4 WALL-MOUNTS
MCS603R	30A	No fuse	—	5.52	6.13	For enclosures that accept these devices, see page F2-F5.	For enclosures that accept these devices, see page F6-F8.
MCS603R	30A	30A-250V	H, K, R	8.11	6.13		
MCS603R	30A	30A-600V	H, K, R	10.11	6.13		
MCS603R	30A	30A-600V	J	8.48	6.13		
MCS606R	60A	No fuse	—	5.52	6.13		
MCS606R	60A	60A-250V	H, K, R	7.86	6.13		
MCS606R	60A	60A-600V	H, K, R	10.38	6.13		
MCS606R	60A	60A-600V	J	8.36	6.13		
MCS610R	100A	No fuse	—	7.59	7.38		
MCS610R	100A	100A-250V	H, K, R	11.85	7.38		
MCS610R	100A	100A-600V	H, K, R	13.85	7.38		
MCS610R	100A	100A-600V	J	10.60	7.38		
MCS620R	200A	No fuse	—	9.02	9.17		
MCS620R	200A	200A-250V	H, K, R	14.70	9.17		
MCS620R	200A	200A-600V	H, K, R	17.20	9.17		
MCS620R	200A	200A-600V	J	13.32	9.17		

SDN12 SERIES & SN4 SERIES ENCLOSURES DISCONNECT SPACE OCCUPIED & AVAILABLE WIRING SPACE INFORMATION

I-T-E CIRCUIT BREAKERS FOR MAX-FLEX™ OPERATORS					
COMPLETE OPERATOR MECHANISM	CIRCUIT BREAKER FRAME	MAXIMUM AMP RATING	CIRCUIT BREAKER HEIGHT X	CIRCUIT BREAKER WIDTH Y	CIRCUIT BREAKER TYPE
FHOE036	ED	125A	6.34	3.00	ED2, ED4, ED6, HED4, HED6
FHOE036	CED	125A	9.58	3.00	CED6
FHOF036	FD	250A	9.50	4.50	FXD6-A, FD6-A, HFD6, FXD6-ETJ, HHFD6, HHFXD6
FHOJ036	CFD	250A	14.25	4.50	CFD6, CFD6-ETI
FHOJ036	JD	400A	11.00	7.50	JXD2, JXD6, JD6, HJD6, HHJD6, HHJXD6, JXD6-ETI
FHOJ036	CJD	400A	17.86	7.50	CJD6, CJD6-ETI
FHOJ036	LD	600A	11.00	7.50	LXD6, LD6, HLD6, HHL6, HHLXD6, LXD6-ETI
FHOJ036	CLD	600A	17.86	7.50	CLD6, CLD6-ETI
FHOLM036	LMD	800A	16.00	9.00	LMD6, LMXD6, HLM6, HLMXD6, LMXD6-ETI
FHON048*	MD	800A	24.00	9.00	MD2, MXD6, HMD6, HMXD6, CMD6, MXD6-ETI, CMD6-ETI
FHON048*	ND	1200A	24.00	9.00	ND6, NXD6, HND6, HNXD6, CND6

Mechanisms and circuit breakers listed above will fit any SDN12 wall-mounts on pages F2-F5, or SN4 wall-mounts on pages F6-F8 except as noted. The last 3 digits of operator mechanism number indicates cable length in inches. Also 48" cables are available for ED, FD, JD/LD operators, and 60" cables for MD/ND, PD/RD operators.

For Type 4 applications order handle, cable and circuit breaker separately.

*This operator mechanism can only be installed in catalog number SDN12603812A (see page F3) which has the appropriate flange cutout.

Space Occupied by Disconnect

- The I-T-E Max-Flex™ cable system allows the disconnect to be positioned independent from the flange-mounted handle mechanism.
- Refer to **National Electrical Code® 1996** article 430-10(b) for wiring space "WB" required for line side conductors.
- Refer to Siemens I-T-E installation instructions for limits on disconnect location when 36-inch or 48-inch Max-Flex™ cables.
- Space occupied by disconnect is determined by overall height "X", width "Y", wire bend space "WB" and location "G" as selected from right to left.

SQUARE D CLASS 9422 DISCONNECT SWITCHES USED WITH CABLE MECHANISM 9422-CFT30 AND 9422A-1 HANDLE MECHANISM							
SWITCH	AMP RATING	FUSE CLIP	FUSE CLASS	DISCONNECT HEIGHT X	DISCONNECT WIDTH Y	SDN12 WALL-MOUNTS	SN4 WALL-MOUNTS
TCN-30	30A	No fuse	—	5.90	6.20	For enclosures that accept these devices, see page F2-F5.	For enclosures that accept these devices, see page F6-F8.
TCF-30	30A	30A-250V	H, K, R	7.50	6.20		
TCF-33	30A	30A-600V	H, K, R	10.15	6.20		
TCF-33	30A	60A-250V	H, K, R	8.15	6.20		
TCF-33	30A	30A-600V	J	7.50	6.20		
TDN-60	60A	No fuse	—	5.90	6.20		
TDF-60	60A	30A-600V	H, K, R	10.15	6.20		
TDF-60	60A	60A-250V	H, K, R	8.15	6.20		
TDF-63	60A	60A-600V	H, K, R	10.65	6.20		
TDF-63	60A	60A-600V	J	7.50	6.20		
TEN-10	100A	No fuse	—	5.90	6.20		
TEF-10	100A	100A-250V	H, K, R	10.35	6.20		
TEF-10	100A	100A-600V	H, K, R	10.35	6.20		
TEF-10	100A	100A-600V	J	10.35	6.20		

Use switches listed above with appropriate cable mechanism and 9422-A1 handle mechanism.

SQUARE D CLASS 9422 CABLE MECHANISM FOR CIRCUIT BREAKERS						
CABLE TYPE SWITCH	AMP RATING	FRAME TYPE	CIRCUIT BREAKER HEIGHT X	CIRCUIT BREAKER WIDTH Y	SDN12 WALL-MOUNTS	SN4 WALL-MOUNTS
9422 CGJ30	75A	GJL	4.75	3.50	For enclosures that accept these devices, see page F2-F5.	For enclosures that accept these devices, see page F6-F8.
9422 CGJ300	100A	GJL	4.75	3.50		
9422 CGJ30	100A	FAL, FHL	6.00	4.50		
9422 CGJ30	250A	KAL, KHL	8.00	4.50		
9422 CGJ30	400A	LAL, LHL, Q4L	11.00	6.00		

Use cable mechanism with appropriate circuit breaker and 9422-A1 handle mechanism. Cable operators are available in 3-foot, 5-foot, and 10-foot lengths. Numbers shown (30) are for 3-foot cables.

Space Occupied by Disconnect Switch or Circuit Breaker

- Square D cable mechanisms allows disconnect devices to be positioned independent from the flange-mounted handle mechanism.
- Refer to **National Electrical Code® 1996** article 430-10(b) for wiring space "WB" required for line side conductors.
- Choose cable mechanism length based on placement of disconnect in enclosure. See Square D Instruction Bulletin for minimum bend radius for cable.
- Space occupied by disconnect is determined by overall height "X", width "Y", wire bend space "WB" and location "G" as selected from right to left.



WIEGMANN

DATA SUBJECT TO CHANGE WITHOUT NOTICE

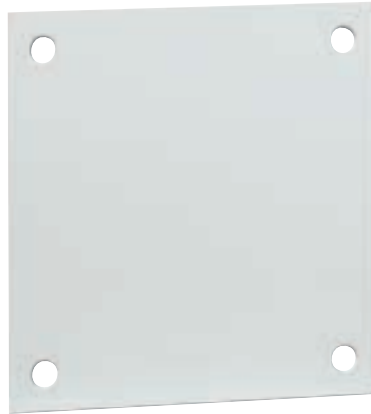
**SDN12 SERIES & SN4 SERIES ENCLOSURES
DISCONNECT SPACE OCCUPIED & AVAILABLE WIRING SPACE INFORMATION**

F15

SQUARE D CLASS 9422 DISCONNECTS										
TYPE NUMBER						WIRE BEND SPACE "WB" ABOVE DISCONNECT				
						SDN12 WALL-MOUNTS (PAGE F2-F5)			SN4 WALL-MOUNTS (PAGE F6-F8)	
						AMP RATING	FUSE CLIP	FUSE CLASS	SPACE OCCUPIED	
F	G									
TCN-30	30A	No fuse	—	3.80	6.84	3.69	6.03	10.56	7.56	10.56
TCF-30	30A	30A-250V	H, K, R	5.53	6.84	3.69	6.03	10.56	7.56	10.56
TCF-33	30A	30A-600V	H, K, R	8.15	6.84	3.69	6.03	10.56	7.56	10.56
TCF-33	30A	60A-250V	H, K, R	6.15	6.84	3.69	6.03	10.56	7.56	10.56
TCF-33	30A	30A-600V	J	5.53	6.84	3.69	6.03	10.56	7.56	10.56
TDN-60	60A	No fuse	—	3.80	6.84	3.69	6.03	10.56	7.56	10.56
TDF-60	60A	30A-600V	H, K, R	8.15	6.84	3.69	6.03	10.56	7.56	10.56
TDF-60	60A	60A-250V	H, K, R	6.15	6.84	3.69	6.03	10.56	7.56	10.56
TDF-63	60A	60A-600V	H, K, R	8.65	6.84	3.69	6.03	10.56	7.56	10.56
TDF-63	60A	60A-600V	J	5.53	6.84	3.69	6.03	10.56	7.56	10.56
TEN-10	100A	No fuse	—	3.80	6.84	—	5.91	10.44	7.44	10.44
TEF-10	100A	100A-250V	H, K, R	8.25	6.84	—	5.91	10.44	7.44	10.44
TEF-10	100A	100A-600V	H, K, R	10.25	6.84	—	5.91	10.44	7.44	10.44
TEF-10	100A	100A-600V	J	7.05	6.84	—	5.91	10.44	7.44	10.44
TC-1	30A	No fuse	—	5.75	6.00	3.12	5.12	9.62	6.62	9.62
TC-2	30A	30A-250V	H, K, R	5.75	6.00	3.12	5.12	9.62	6.62	9.62
TC-3	30A	30A-600V	H, K, R	7.75	6.00	3.12	5.12	9.62	6.62	9.62
TC-3	30A	60A-250V	H, K, R	5.88	6.00	3.12	5.12	9.62	6.62	9.62
TC-3	30A	30A-600V	J	5.75	6.00	3.12	5.12	9.62	6.62	9.62
TD-1	60A	No fuse	—	6.38	6.62	3.62	6.00	10.50	7.50	10.50
TD-2	60A	30A-600V	H, K, R	8.50	6.62	3.62	6.00	10.50	7.50	10.50
TD-2	60A	60A-250V	H, K, R	6.50	6.62	3.62	6.00	10.50	7.50	10.50
TD-3	60A	60A-600V	H, K, R	9.00	6.62	3.62	6.00	10.50	7.50	10.50
TD-3	60A	60A-600V	J	6.38	6.62	3.62	6.00	10.50	7.50	10.50
TE-1	100A	No fuse	—	4.75	8.38	—	5.75	10.25	—	10.25
TE-2	100A	100A-250V	H, K, R	7.50	8.38	—	5.75	10.25	—	10.25
TE-2	100A	100A-600V	H, K, R	9.50	8.38	—	5.75	10.25	—	10.25
TE-2	100A	100A-600V	J	6.25	8.38	—	5.75	10.25	—	10.25
TE-3	100A	200A-600V	J	13.75	8.38	—	5.75	10.25	—	10.25
TF-1	200A	No fuse	—	5.50	11.62	—	—	8.88	—	8.88
TF-2	200A	200A-250V	H, K, R	11.50	11.62	—	—	8.88	—	8.88
TF-2	200A	200A-600V	H, K, R	14.00	11.62	—	—	8.88	—	8.88
TF-2	200A	200A-600V	J	10.12	11.62	—	—	8.88	—	8.88
TF-3	200A	400A-600V	J	14.50	11.62	—	—	8.88	—	8.88
RG-1	75A	GJL	Circuit breaker	3.53	3.74	3.59	5.93	10.47	7.47	10.47
RG-1	100A	GJL	Circuit breaker	3.53	3.74	3.59	5.93	10.47	7.47	10.47
RN-1	100A	FAL, FHL	Circuit breaker	5.12	5.25	3.75	6.12	10.62	7.62	10.62
RP-1	250A	KAL, KHL	Circuit breaker	7.12	5.62	4.25*	6.88	11.38	8.38	11.38
RR-1	400A	LAL, LHL, Q4L	Circuit breaker	7.62	8.75	—	—	7.00	—	7.00

*Not recommended except with #1 or smaller line conductors.

**NP SERIES BACK PANELS
ACCESSORY PANELS FOR NEMA 1, 3R, 12, 4 & 4X WALL-MOUNTS**

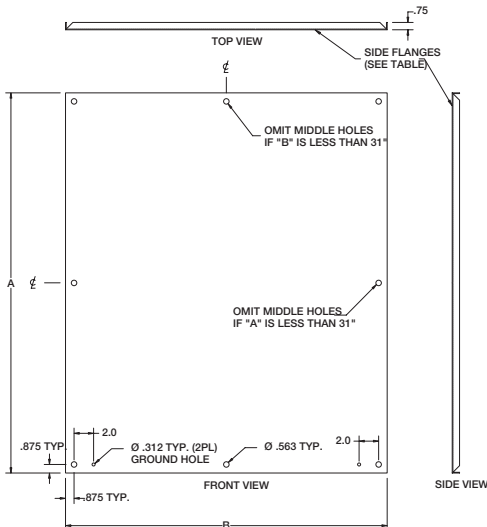


NP1212

FEATURES-SPECIFICATIONS

Description

- Steel and stainless panels are 12 gauge
 - Aluminum panels are 5052-H32 aluminum alloy, .080-inch thick
 - Panel with any side over 17.00" has 3/4" flange on all sides
 - Steel panels are painted white polyester powder
 - Panels fit the following enclosures:
 - NEMA 1, Large (NIC)
 - NEMA 3R, Hinge Cover (RHC, Large)
 - NEMA 4, 412, & 4X Single Door (N12, N4, N412, SSN4)
 - NEMA 12 2-Door Wall-Mount, (WAWF), Single Door
- Right Flange Disconnect (SDN12, ABN12)
Large JIC (B-CH, Large)
Single door N12



BACK PANELS FOR NEMA 1, 3R, 12, 4 & 4X WALL-MOUNT ENCLOSURES			
PAINTED STEEL (WHITE)	CATALOG NUMBER		PANEL SIZE A X B
	316 STAINLESS STEEL	ALUMINUM	
NP1212	—	—	9.00X9.00 (229X229)
NP1224	—	—	9.00X21.00 (229X533)
NP1612	NP1612SSA	ALNP1612	13.00X9.00 (330X229)
NP1616	NP1616SSA	ALNP1616	13.00X13.00 (330X330)
NP1620	—	—	17.00X13.00 (432X330)
NP2012	—	—	17.00X9.00 (432X229)
NP2016	NP2016SSA	ALNP2016	17.00X13.00 (432X330)
NP2024	—	—	21.00X17.00 (533X432)
NP2020	NP2020SSA	ALNP2020	17.00X17.00 (432X432)
NP2412	—	—	21.00X9.00 (533X229)
NP2416	NP2416SSA	—	21.00X13.00 (533X330)
NP2420	NP2420SSA	ALNP2420	21.00X17.00 (533X432)
NP2424	NP2424SSA	ALNP2424	21.00X21.00 (533X533)
NP2430	—	—	27.00X21.00 (686X533)
NP3016	—	—	27.00X13.00 (686X330)
NP3020	NP3020SSA	—	27.00X17.00 (686X432)
NP3024	NP3024SSA	ALNP3024	27.00X21.00 (686X533)
NP3030	NP3030SSA	—	27.00X27.00 (686X686)
NP3036	—	—	33.00X27.00 (838X686)
NP3042	—	—	39.00X27.00 (991X686)
NP3624	NP3624SSA	ALNP3624	33.00X21.00 (838X533)
NP3630	NP3630SSA	ALNP3630	33.00X27.00 (838X686)
NP3636	NP3636SSA	—	33.00X33.00 (838X838)
NP3642	—	—	39.00X33.00 (991X838)
NP4024	—	—	37.00X21.00 (940X533)
NP4224	—	—	39.00X21.00 (991X533)
NP4230	NP4230SSA	—	39.00X27.00 (991X686)
NP4236	NP4236SSA	—	39.00X33.00 (991X838)
NP4824	—	—	45.00X21.00 (1143X533)
NP4830	—	—	45.00X27.00 (1143X686)
NP4836	NP4836SSA	ALNP4836	45.00X33.00 (1143X838)
NP6030	—	—	57.00X27.00 (1448X686)
NP6036	NP6036SSA	ALNP6036	57.00X33.00 (1448X838)
NP7230	—	—	69.00X27.00 (1753X686)
NP7236	—	—	69.00X33.00 (1753X838)